

Montana



Montana MOUNTAINEER EDITION





Beautiful living quarters make this Model 347THT Toy Hauler a comfortable and relaxing retreat after a day of playing hard. Like all our Montana models, innovative features and special amenities make your travels fun and enjoyable.



WELCOME TO THE MOUNTAINEER EDITION

Bring the kids and grandkids along with Model 345DBQ. This family-friendly floor plan includes a kids' room with dual bunk beds, closet, entertainment center, and half bath. (top left)

This private walk-through half bath can be accessed from the kids' room or the kitchen area. (top right)

Restful sleep awaits you in the master bedroom adorned with a quilted bedspread, pillow shams, and matching window treatment. Plenty of storage is found in the large closet with full width sliding mirror doors, three-drawer dresser, and under-bed storage compartment. The bedroom is also plumbed and wired to accommodate a washer/dryer. (bottom)



LIVE IN LUXURY

The L-shaped kitchen in Model 324RLQ features beautiful efficiency created with floor-to-ceiling residential cabinetry in rich "Mountain Cherry" along with wide, deep drawers and large home-like appliances. (Shown top)



Relax with family and friends, surf the "net", or enjoy your favorite DVD with Model 324RLQ's built-in desk and entertainment center. (Shown bottom left)



Privacy and roomy comfort are the hallmark of Model 324RLQ's enclosed bathroom, featuring a solid panel door, oiled bronze glass tub/shower enclosure, residential size sink, and large mirrored medicine cabinet. (Shown bottom right)



MOUNTAINEER EDITION FEATURES



1. Exterior Marine Grade Speakers (with Control Switch): Enjoy stereo and DVD outdoors under the comfort of your awning outside your unit.
2. 26" LCD Television with Swing Bracket and Digital Antenna: Enjoy better picture HD quality and optimum viewing angles from any seating area.
3. 3" Welded Aluminum Floor Joists 16" on Center: Provides a lightweight aluminum floor that is superior to competitors' wood floors and eliminates warping and water damage.
4. Outside Camp Kitchen (Models 285, 332, 345): Built-in exterior cook top and sink with quick LP and water connection provides convenient outside cooking using the coach LP system.
5. Outside Shower with Quick Connect: Eliminates tracking dirt inside the coach with easy and efficient outside cleaning that includes exterior hot and cold water with multiple spray options.
6. Centralized Control Panel Under a Glass Cabinet Door: A convenient place for all the controls in one location hidden under a decorative smoked glass door.
7. Redesigned Cabinet Doors with Tempered Glass: Decorative glass doors provide an elegant high-end look from the outside while concealing from view the items stored inside.
8. Goodyear Tires with Optional Aluminum Rims and Equa Flex™ Suspension: Name brand tires with upgraded wheel and suspension provide a better look and feel. Goodyear Tires give you the peace of mind of reliable towing and nationwide service while Equa Flex™ suspension reduces road shock for a smoother, more comfortable ride.
9. Air Mattress Hide-A-Bed Sofa: A plush sofa converts into an ultra comfortable sleeping area. An electric pump quickly inflates and deflates the air mattress. With no mattress springs, the sofa bottom contains a large storage drawer.
10. Improved Front Cap with Increased Turning Radius and Hitch Vision: The aerodynamic cap enhances towing efficiency by 30% even when towed by short bed trucks. Fuel economy and stability are also improved.
11. Washer/Dryer Prep in the Bedroom (Standard in All FW Floor Plans): Plumbed and wired for easy installation of a combination washer/dryer. If you choose not to install a washer/dryer, this space serves perfectly as an additional wardrobe.

- MOUNTAINEER VALUE PACKAGE**
- Black tank flush
 - Fabric Bedroom headboard
 - (2) bedside windows in slide-out
 - 12v FM/CD/DVD with surround sound
 - RG 6 satellite prep
 - 50 amp service
 - 10 gal. DSI 110/12v water heater
 - Deluxe porcelain toilet
 - Skydome over tub
 - 8' large double door refrigerator
 - Range cover
 - Raised panel refer front
 - Electric front jacks
 - Rear roof ladder
 - Long travel rear stabilizer jacks
 - Fold away entry handle
 - (2) patio scare lights
 - Undermount spare tire and carrier

- MOVING TO MONTANA PACKAGE**
- Aerodynamic front cap with Hitch Vision™ and improved turning radius
 - 26" LCD TV with HD tuner
 - Outside speakers
 - Outside shower with quick connect hose
 - Air mattress hide-a-bed sofa
 - Washer/dryer prep
 - Ceiling fan with light kit
 - Power vent fan – kitchen
 - 15,000 BTU A/C with Quick Cool
 - Deep tint safety glass windows
 - Glacier package
 - Dexter E-Z Lube® axles with 8 lug wheels
 - Cabinet toe kicks
 - Microwave
 - 22" oven with broiler
 - High-output range with automatic ignitor
 - Double sink with high rise faucet
 - Water heater bypass
 - Deluxe queen (60 x 80) innerspring mattress
 - Dual reading lights over bed
 - Digital TV antenna with booster

- MOUNTAINEER VALUE PACKAGE**
- 8' large double door refrigerator
 - Fold away entry handle
 - (2) patio scare lights
 - (4) stabilizer jacks
 - Skydome over tub
 - Raised oak refer front
 - Range cover
 - 15" spare tire and carrier
 - DVD/CD player with AM/FM surround
 - Satellite prep
 - Bedroom headboard

- MOVING TO MONTANA PACKAGE**
- 13,500 BTU A/C
 - Microwave
 - Awning
 - 26" LCD flat panel TV in living room
 - Customer Convenience Group (see list below)

- CUSTOMER CONVENIENCE GROUP**
- Dexter E-Z Lube® axles
 - Deep tint safety glass windows
 - Cabinet toe kicks
 - Deluxe bowl sink with high-rise faucet
 - Deluxe foot pedal porcelain toilet
 - Upgraded innerspring mattress
 - High-output range with automatic ignitor and 22" oven
 - Water heater bypass
 - Television antenna with booster
 - Black tank flush

- ROOF: R-14**
1. Rear Ladder
 2. 15,000 BTU A/C
 3. One-Piece EPDM Rubber Roof Membrane
 4. Aluminum Radius Roof Transition Molding (FW Only)
 5. 3/8" Roof Decking
 6. Fiberglass Insulation
 7. Wire Harness
 8. Aluminum Wrapped AC Duct
 9. Ceiling Decking with Vinyl
 10. 5" Fabricated Galvanized Steel Truss Rafters on 16" Centers

- SIDEWALLS: R-9**
11. Fold-Away Grab Handle
 12. 30" x 74" Entry Door with Window

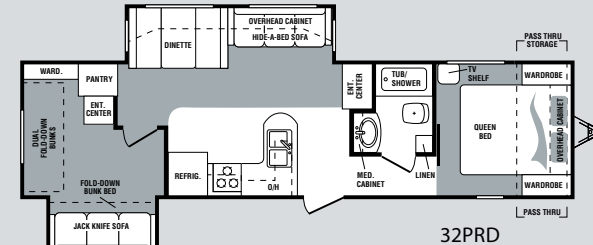
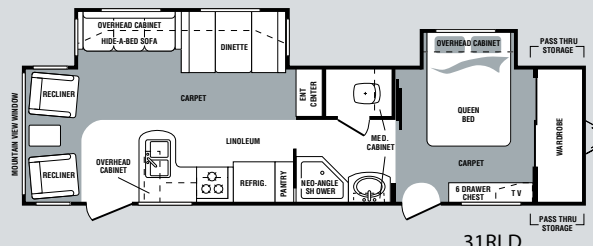
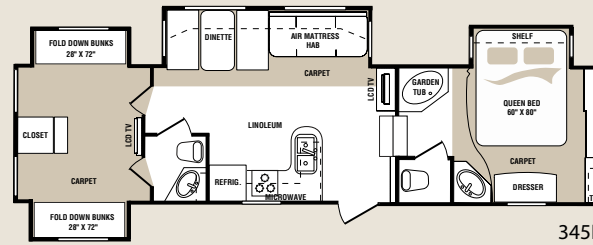
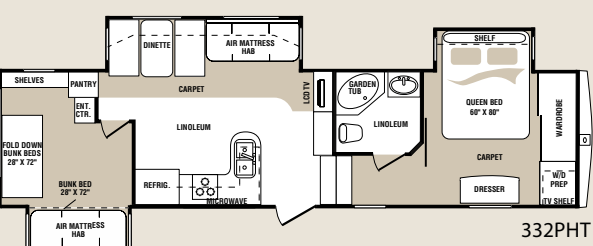
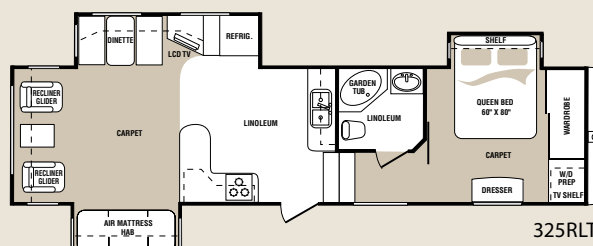
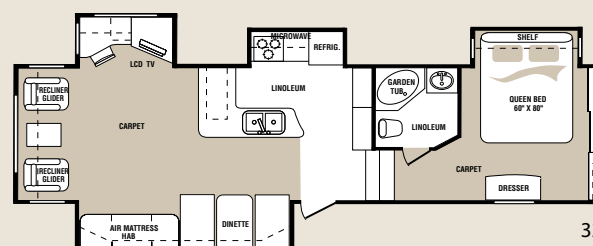
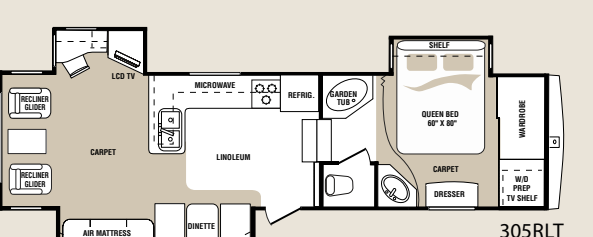
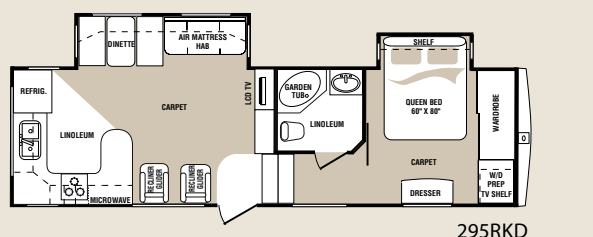
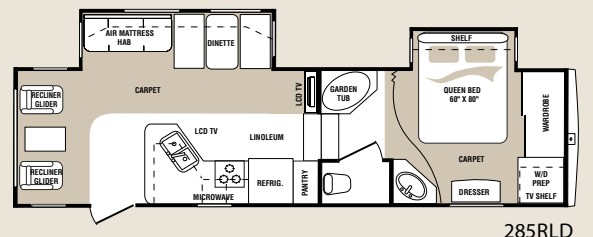
13. Solid Block Insulating Foam
14. 2" Welded Aluminum Wall Studs
15. Interior Decorator Board
16. Electro-Galvanized Sheet (EGS) Metal Backing Strips
17. Second Layer 1/8" Luan Board with Seams Staggered
18. 1/8" Luan Board
19. Gel-Coated Filon™ Fiberglass
20. Heavy Duty Insulated Baggage Doors
21. Patio Awning
22. Scare Light
23. Fiberglass Front Cap with Improved Turning Radius and Hitch Vision

- FLOOR: R-14**
24. Moisture Barrier
 25. Fiberglass Insulation

26. 1/4" ABS Underbelly
27. 3" Large-Capacity Heat Duct
28. Enclosed and Insulated Water Lines
29. Heavy Duty 8-Lug Wheels
30. Powder-Coated 10" Steel "Rolled" I-Beam
31. Linoleum
32. 2" Heat Duct From Furnace Underbelly
33. Service Bay
34. Full Radius-Wrap Aluminum Enclosure
35. 3" Welded Aluminum Floor
36. LP Bottle
37. 5/8" Seamless Floor Decking
38. Carpet Pad
39. Residential-Grade Carpeting with Stain Protectant
40. Hitch Pin

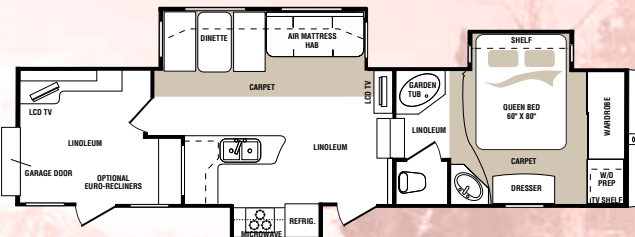


	FIFTH WHEELS							TRAVEL TRAILERS		
	285RLD	295RKD	305RLT	324RLQ	325RLT	332PHT	345DBQ	347THT	31RLD	32PRD
Shipping Weight	9050	9490	9930	10940	10145	10575	11045	10660	8340	8420
Carrying Capacity	3950	4135	4150	3275	3995	3600	3265	3485	2725	2665
Hitch	2045	2070	2080	2215	2140	2175	2310	2145	905	925
Exterior Length	31' 3"	32' 10"	34'	36'	34' 11"	36' 2"	36' 2"	36' 4"	35' 6"	35' 6"
Exterior Width	8'	8'	8'	8'	8'	8'	8'	8'	8'	8'
Exterior Height - Top of A/C	12' 9"	12' 9"	12' 9"	13' 2"	13' 2"	13' 2"	12' 9"	12' 9"	11' 1"	11' 1"
Fresh Water Capacity	67	67	67	67	67	67	67	67	67	67
Waste Water Capacity	38	38	38	38	38	38	76	38	38	38
Grey Water Capacity	76	76	76	76	76	76	76	76	76	76
Tire Size	235/80R16E	235/80R16E	235/80R16E	235/80R16E	235/80R16E	235/80R16E	235/80R16E	235/80R16E	225/75R15D	225/75R15D



347THT TOY HAULER

The roomy garage accommodates your favorite toys or extra gear. Unload the toys, and dual Euro recliners and entertainment center turn the garage area into a den.



- Ramp Door Opening 60" x 72"
- Garage Cargo 48" x 114"
- Ramp 72"
- Ramp Extension 48"

MONTANA MOUNTAINEER STANDARD AND OPTIONAL FEATURES

LIVING AREA	TT	FW
6' 8" interior head room	S	NA
Residential carpeting and upholstery with fabric protector	S	S
Entertainment center with DVD AM/FM CD surround sound	S	S
Tall slide room with "plate depth" overhead cabinets	S	S
Dual swivel rocker(s) (most models)	S	NA
Dual recliner/glidors	O	S
Recliner/glider (s) IPO swivel	O	NA
Euro recliner(s) with ottoman (347 only)	NA	O
High back desk chair	NA	O
Air mattress hide-a-bed sofa (most models)	O	S
Pleated day/night window shades	S	S
Deluxe oiled bronze decorative lighting	S	S
Free-standing end table with lamp	NA	S
Decorative ceiling fan with 110V light fixture	NA	S
Deluxe crown molding	NA	S
12' wraparound super sofa booth (NA 325)	NA	O
Jackknife sofa IPO (2) recliner/glidors (295 only)	NA	O

BEDROOM	TT	FW
Deluxe innerspring 60" x 80" mattress	S	S
Quilted bedspread, two pillows with shams	S	S
Overhead TV cabinet with co-ax and 110V outlet	M	M
Six-drawer bedroom dresser with full extension drawer guides (most models)	S	S
Solid panel bedroom door(s) with oiled bronze handles	S	S
Full width sliding mirror closet doors	S	S
Under-bed storage with lift-assist struts	S	S
Washer/dryer hookup (prep)	NA	S

BATHROOM	TT	FW
Deluxe residential porcelain toilet	M	M
Larger residential-size bath sink	S	S
Tub/shower with oiled bronze glass enclosure	S	S
Medicine cabinet - large mirrored door	S	S
Oiled bronze bath sink faucet	S	S
Oiled bronze vanity light	S	S
Full linoleum bath flooring	S	S
Solid panel doors with oiled bronze handles	S	S
Deluxe wood grain towel holder	S	S
Power vent fan in commode area	S	S

KITCHEN	TT	FW
Solid "Mountain Cherry" hardwood raised panel cabinet doors with cathedral tops	S	S
Heavy-duty steel drawer glides with ball bearing rollers	S	S
Cabinet toe kicks (most models)	M	M
Lighted range hood with fan	S	S
Wide deep drawers - real "Mountain Cherry" wood	S	S
Residential-size overhead "Mountain Cherry" cabinets	S	S
Deluxe bowl kitchen sink with oiled-bronze high-arch faucet	S	S
Dual sink cover cutting boards	S	S
Garbage can	S	S
Silverware tray	S	S
Power vent fan in kitchen/living room	S	S
Booth dinette with storage cabinet and drawer	S	S
Free standing dinette with 4 chairs	O	O

APPLIANCES	TT	FW
8 cu.ft. double-door refrigerator	S	S
Deluxe microwave oven with exterior exhaust fan	M	M
15,000 BTU ducted roof air conditioner with wall-mount thermostat and "Quick Cool"	NA	M
15,000 BTU A/C IPO 13,500 BTU A/C	O	NA
2 nd 13,500 A/C (50 amp service req.)	O	O
Wire and Frame for 2 nd A/C (50 amp service req.)	O	O
High-output range with automatic ignitor and 22" oven	M	M
26" LCD HD TV	M	M
Digital TV antenna and booster	M	M
Power vent fan in bath/bedroom	NA	O

UTILITIES	TT	FW
Water heater by-pass kit	M	M
10-gallon gas/electric DSI water heater	S	S
Systems monitor panel	S	S
55 amp convertor	S	S
30 amp electrical service	S	NA
50 amp electrical service	O	S

EXTERIOR	TT	FW
15" wheels and Goodyear tires	S	NA
16" wheels and Goodyear tires	NA	S
Equa Flex™ Suspension	NA	O
Aluminum wheels	O	O
2" laminated fiberglass exterior walls	S	S
5" fabricated steel truss rafters	S	S
Molded fiberglass front end cap	NA	S
Block foam insulation in sidewall (R-9)	S	S
Residential fiberglass insulation in floor and roof (R-14)	S	S
Fully enclosed and heated underbelly	S	S
Enclosed and heated holding tanks and water lines	S	S
Hitch and security light	S	S
Extra wide 30" entrance door	S	S
Radius baggage doors with locking latches	S	S
Smooth-operating, easy-to-use entrance steps	S	S
"Mountain Gold" radius wrap lower walls	S	S
Dexter E-Z Lube® axles	M	M
Deluxe patio awning	M	M
110v outlet and TV hook up	NA	S
Outside speakers with control switch	NA	S
Outside shower with quick connect	NA	S
Outside camp kitchen (285, 332, 345 only)	NA	O
Power tongue jack	O	NA
Slide awning package (single slide)	O	NA
Slide awning package (double slides)	O	O
Slide awning package (triple slides)	NA	O
Slide awning package (quad slides)	NA	O
Pass-through slide tray	NA	O
Dual pane windows	NA	O

Interior Decors
 Autumn Harvest
 Woodland
 Mountain Vineyard

S = Standard Feature O = Option M = Moving to Montana Package

Your Montana Dealer:

Product information is as accurate as possible as of the date of publication of this brochure. Features, floor plans, and specifications are subject to change without notice. Please also consult Keystone's website at keystonerv.com for more current product information and specifications. Tow Vehicle Disclaimer: CAUTION: Owners of Keystone recreational vehicles are solely responsible for the selection and proper use of tow vehicles. All customers should consult with a motor vehicle manufacturer or their dealer concerning the purchase and use of suitable tow vehicles for Keystone products. Keystone disclaims any liability or damages suffered as a result of the selection, operation, use or misuse of a tow vehicle. KEYSTONE'S LIMITED WARRANTY DOES NOT COVER DAMAGE TO THE RECREATIONAL VEHICLE OR THE TOW VEHICLE AS A RESULT OF THE SELECTION, OPERATION, USE OR MISUSE OF THE TOW VEHICLE. 09/07



2642 Hackberry Drive
 Goshen, IN 46526
 574-535-2100

www.keystone-mountaineer.com