

CRUISER
CROSSROADS

Fifth Wheel Models

CRUISER

CROSSROADS



CROSSROADS

Spacious Interiors



CF30SK Bathroom with skylight



CF30SK Shown with available free standing table and chairs

Warranty

The best warranty in the industry. For details, please visit our website at www.crossroadsrv.com.

We invite you to compare our quality, value, service program and 2+5 warranty plan with those of our competition. You'll find we are unsurpassed in all four.



CF30SK Kitchen



CF30SK Bedroom slide-out

CROSSROADS
CRUISER

CF27RL

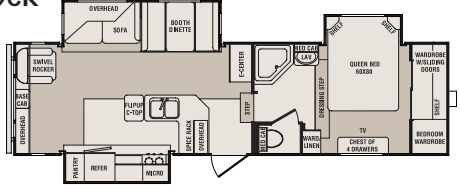


optional bathroom

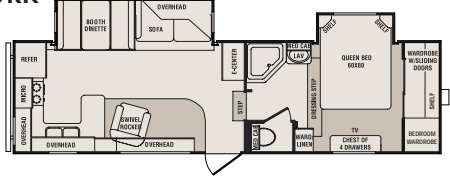
CF28RL



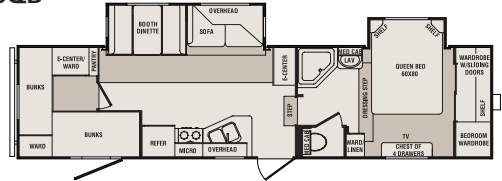
CF29CK



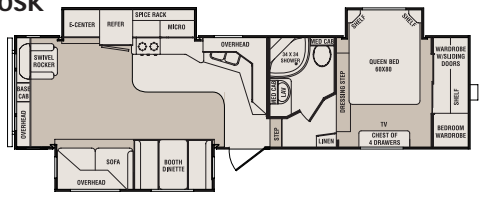
CF29RK



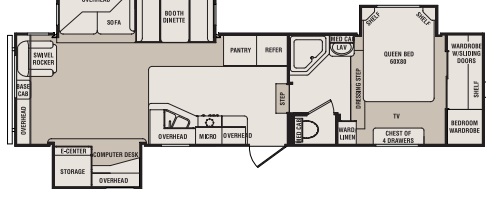
CF30QB



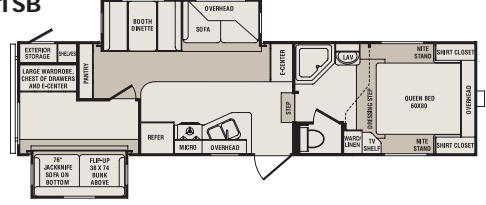
CF30SK



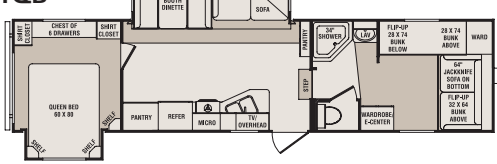
CF31MK



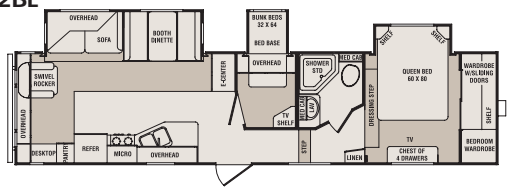
CF31SB



CF31QB

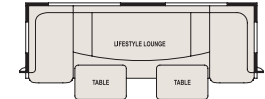


CF32BL



Fifth Wheel Tanks

- Fresh water capacity - 58 gallons (except RF25RL: 40 gallon)
- Black water capacity - 40 gallons
- Grey/galley capacity - 80 gallons (except RF25RL: 40 gallon)

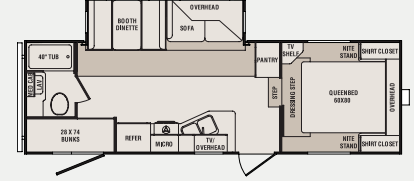


Cruiser optional Lifestyle Lounge

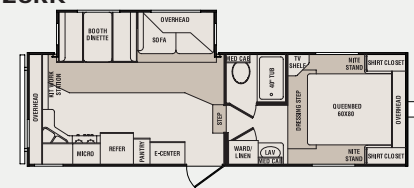
LIFESTYLE LOUNGE NOT AVAILABLE ON RF25RL
(Overhead cabinet varies by model)

TANDEM TOW FLOOR PLANS

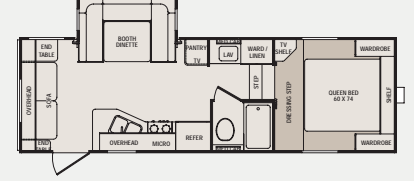
CF25RB



CF26RK



RF25RL



Specifications

	CF27RL	CF28RL	CF29CK	CF29RK	CF30QB	CF30SK	CF31MK	CF31SB	CF31QB	CF32BL	CF25RB	CF26RK	RF25RL
Dry Weight	6824	7271	7741	7653	7916	7990	8378	8156	8204	8450	6234	6622	5560
Carrying Capacity	4069	3847	3407	3345	3367	3053	2705	2882	2884	2768	4705	4286	2304
Hitch Weight	1450	1675	1705	1555	1840	1600	1640	1595	1645	1775	1505	1465	1380
Axle Weight	5374	5596	6036	6098	6076	6390	6738	6561	6559	6675	4738	5157	4180
Exterior Length	29' 5"	30' 11"	31' 5"	30' 11"	34' 3"	32' 10"	33' 11"	32' 11"	34' 11"	34' 11"	27' 3"	27' 6"	26' 6"
Ext. Height with AC	11' 8"	11' 8"	11' 10"	11' 8"	12' 4"	11' 10"	12' 2"	12' 7"	12' 2"	12' 7"	12' 0"	11' 10"	11' 8"

Tire Sizes: 225/75R15 on all models (except RF25RL: 205/75R15)

Living Room Standards

- Booth dinette with drawer storage underneath
- 64" Jackknife style sofa
- Flush floor slide-out with large dinette window
- Lighted entertainment center
- LCD TV mounting bracket
- Satellite/cable hook-up
- 60 lb ball bearing drawer guides
- 12 volt Dolby digital surround system (MP3/iPod plug in)
- Colored day/night shades
- Lounge chair with foot stool (varies by floor plan)

Kitchen Standards

- 6 cu ft Double door refrigerator
- Self-igniting 22" chef range with 3 burners, cover, hood & microwave
- Formica self-edge countertop
- Solid wood drawer fronts with metal glides
- Wood panel switch key cabinet
- Knife rack

Bedroom Standards

- Deluxe innerspring mattress
- Full 60x80 queen bed
- Lift-up bed with gas struts for extra storage
- 2 Night stands
- Spacious closets
- TV shelf and hook-up
- LCD flip down TV bracket
- Extra tall chest of drawers
- Colored day/night shades

Bathroom Standards

- 40" ABS tub/shower with surround (some models 36")
- Corner shower with glass doors in double and triple slide
- Bathroom storage (varies by model)
- Laundry chute to cargo storage
- Skylight in tub/shower
- Water heater bypass and EZ winterize kit
- 6 Gallon gas/electric water heater with DSI
- Porcelain foot flush toilet

Construction Standards

- One-piece, rolled-edge rubber roof with 12 yr warranty
- 3/8" Plywood roof decking
- 16" OC Aluminum truss roof rafters and tube floor joists
- R-14 Fiberglass roof and floor insulation
- Aluminum radius roof transition wrap
- Full fiberglass front cap
- 30,000 BTU floor ducted furnace

- Aluminum tube 16" OC studs for sidewalls, endwalls and slide rooms
- Thermo-Foil
- R-7 Sidewall fiberglass insulation
- 2 Layers of Luan board - staggered for seamless walls
- Lamilux fiberglass exterior for easy maintenance
- 8" Steel I-beam frame (except CF32BL 10" Steel I-beam frame)
- 5/8" Lightweight tongue and groove plywood floor decking
- Residential grade carpet with 1/2" foam carpet pad
- Linoleum bathroom floor
- Power front jacks
- Electric slide system(s) with individual room controls
- 15" Tires with white spoked rims (aluminum option shown)
- 5,200 lb Axles
- Fully enclosed, insulated underbelly with radiant heat

Exterior Standards

- Tinted glass windows
- Scare light on both sides
- Extended pin box
- Extra large capacity cargo storage
- 30" Radius entry door with screen
- Triple entry step
- Dual 30 lb LP tanks
- Aluminum bumper cover
- EZ lube hubs
- Heated enclosed gate valves
- Water management utility compartment
- Gel coat front cap with enhanced turning radius

Enhancement Package Standards

- Ducted 13,500 BTU A/C
- Patio awning
- Tuscan raised panel arch upper and lower cabinet doors (Manufacturer's Lifetime Limited Warranty)
- Roof ladder
- TV antenna
- AM/FM/CD/DVD player/MP3 and iPod plug in
- Dolby digital surround sound
- Black tank flush
- Swing-out entry assist handle
- 65 Amp converter
- Outdoor speakers
- Black formed refrigerator front
- LP quick disconnect
- Equa-Flex

Popular Optional Features

- Slide-out awnings
- Rain sensor fans
- Spare tire and carrier
- Chrome center caps
- Rear leveling jacks
- Aluminum rims
- 15,000 BTU A/C
- 10 Gallon gas/electric water heater with DSI
- Upgraded insulation
- Outside shower
- LCD TV
- Air mattress hide-a-bed sofa
- Lounge chair with foot stool
- Free-standing table and 4 chairs
- Tuscan refrigerator front
- 8 cu ft Double door refrigerator
- Sink covers
- Bi-fold shower door
- Lifestyle lounge
- 12 volt battery
- Electric awning
- Fireplace with A and B switch
- 30" stabilizer jacks
- Gel glass
- Safety glass



CrossRoads



888-226-7496
www.crossroadsrv.com

Your Local Dealer

THOR
INDUSTRIES, INC.

Thor Industries' strong financial position and industry leadership are your assurance that we will be here to serve you for years to come.